



Karndean  
Designflooring



Loom Loft  
Furniture & Interiors

Retail  
case study



# The brief

Loom Loft is an inspirational new interiors store located at the heart of Lancashire's stunning Ribble Valley, with views across to Pendle Hill and its beautiful surroundings, near Clitheroe, Lancashire.

The store offers an eclectic mix of contemporary and traditional furniture and home products, many of which have been sourced from local manufacturers and suppliers. With a cutting-edge industrial exterior, the furniture store boasts extensive floor to ceiling windows that let light flood in. The design team wanted to create an interior that reflects the mill's industrial heritage and showcases a modern rustic style with a wide variety of room settings in both contemporary and traditional styles to inspire and captivate.



**Sector:** Retail

**Client:** Loom Loft

**Interior Designer:**  
Loom Loft

**Area:** 1386m<sup>2</sup>

**Flooring Contractor:**  
Warehouse Carpets



## The concept

The team knew it was vital that the flooring should not only look fantastic but could also stand up to the wear and tear of a busy retail environment. "We wanted to create an industrial contemporary space with a flooring that would complement our furniture range," explained Boyd Hargreaves, owner and managing director. Karndean's LooseLay Longboard Reclaimed Heart Pine was selected as the ideal option to bring the desired rustic look but with all the practical benefits of luxury vinyl flooring.



# The look

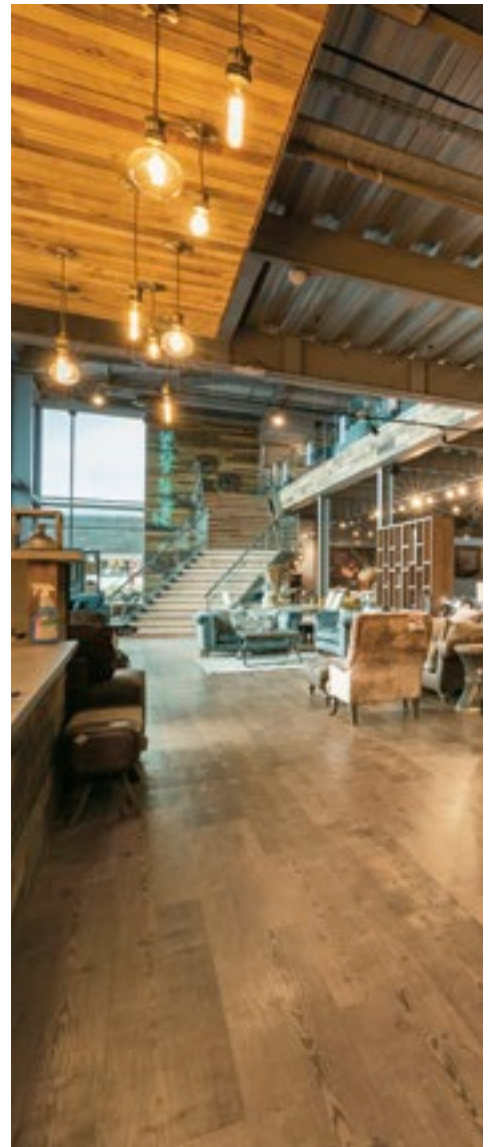
The highly accessible furniture store has been designed as a light filled open plan space that oozes a timeless natural charm. Reclaimed Heart Pine from the LooseLay Longboard collection, with its traditional wood design bearing rich honey tones, natural open grain and aged look of unfinished timber, has been installed throughout the centre to give a cohesive and unobtrusive look.

“The LooseLay Longboard range met all our requirements for a plank design that was wide and long to look more authentic and was also hard wearing with a long commercial warranty,” explained Boyd Hargreaves. “We are delighted with how the flooring fits in well with the design concept of the store. The attractive floor enhances the large retail space and has proved to be easy to maintain. Its warm natural feel is very welcoming to customers and offers a great platform for us to display our extensive and diverse furniture range.”

Product used: ■ Reclaimed Heart Pine **LLP305**












# Products specified:

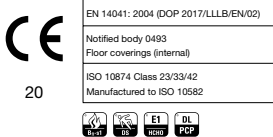


## Karndean LooseLay Longboard

	Standard	Result
 <b>Size</b>	EN ISO 24342	1500 x 250 mm
 <b>Thickness</b>	EN ISO 24346	4.5 mm
 <b>Wear layer</b>	EN ISO 24340	0.55 mm
<b>Guarantee*</b>	Light industrial Commercial Residential	15 years 15 years Lifetime guarantee
 <b>Bevelled edge</b>		No
 <b>Slip resistance</b>	DIN 51130 EN 13893	R10 DS

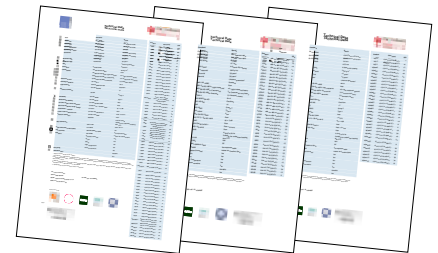
\* Subject to terms. Please speak to your Commercial Specification Manager for more information.

Manufactured to ISO 9001



To view the full technical specification for each of our product ranges visit our website:

[karndean.com/commercialtechdata](http://karndean.com/commercialtechdata)



## View LooseLay in other projects

For more inspiration on our LooseLay range, view our Office case study based on Matches Fashion. The delicate oak grain features and warm tones of LooseLay Ashland, Pearl Oak and Champagne Oak combine with lightly brushed surface textures for a realistic look of wood flooring.

"A combination of light, colour and oak flooring brings a cohesive look to this designer fashion house's new headquarters," Alison Hollier, interior designer at Peldon Rose.

Click here to discover more.



Matches Fashion

Office case study





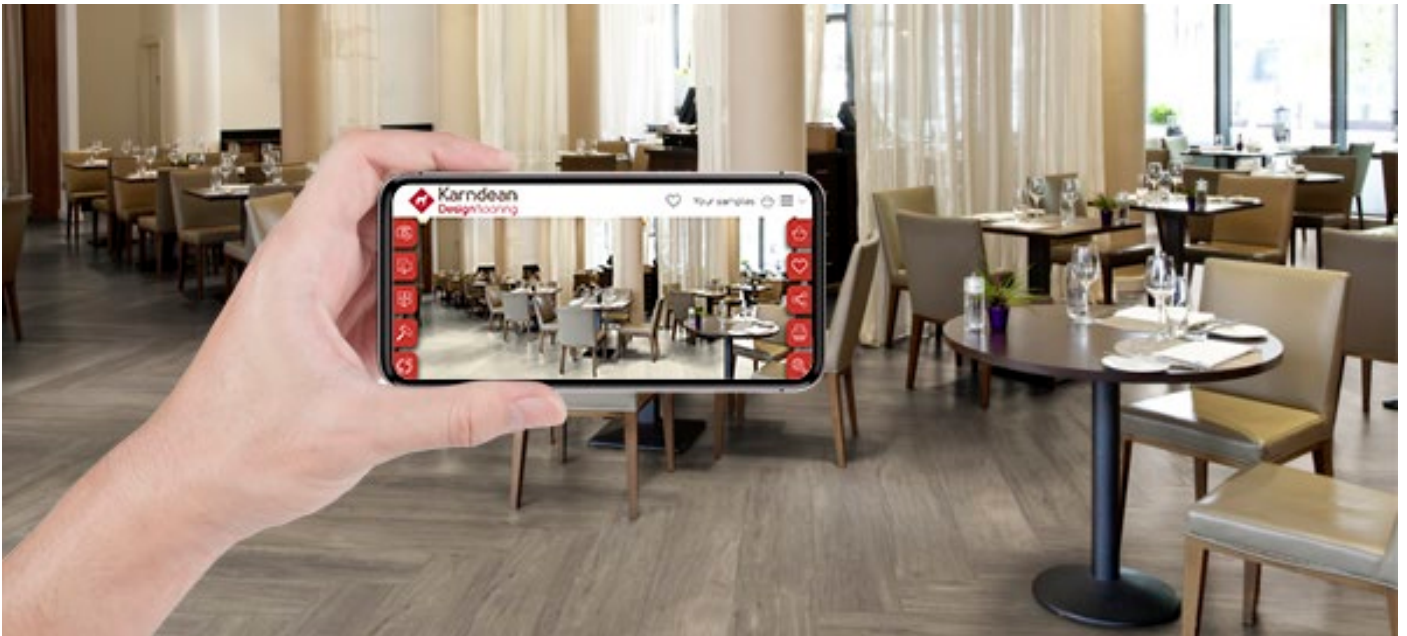
# Feeling inspired?

We have a variety of tools available to help you achieve the look you desire for your project:

## Commercial floorstyle

Check out our interactive room viewer, Floorstyle. Play around with different floor designs, laying patterns and design features using either our examples of typical commercial settings or upload a photo of a project you're currently working on to choose a floor to suit.

[karndean.com/commercialfloorstyle](http://karndean.com/commercialfloorstyle)



## Commercial brochure

Showcasing photography spanning all sectors, our commercial brochure is a comprehensive guide to all of the products we offer.

[karndean.com/commercialbrochure](http://karndean.com/commercialbrochure)



Keep up to date

Follow, Like and Subscribe

